

## KILR<sup>®</sup> K562 Cell Pool

**Catalog Number:** 97-1030P042 **Lot Number:** See Vial

**Contents:** 2 vials, 1.5 x 10<sup>6</sup> cells per vial in 1 mL

### Background

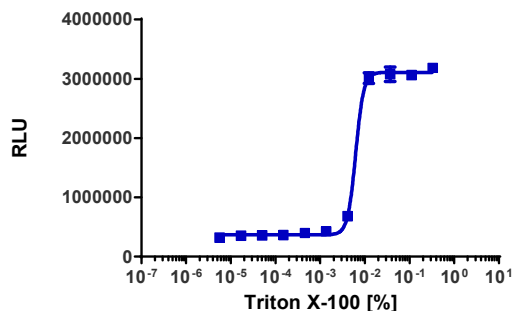
KILR cell lines are engineered to express an enhanced Prolabel (ePL) tagged housekeeping gene and may sometimes overexpress an untagged version of a receptor. Once the cells have been lysed the ePL-tagged protein is released into the media. Addition of enzyme acceptor (EA) will cause the complementation of the  $\beta$ -galactosidase enzyme fragments, EA and ePL. The resulting functional enzyme will hydrolyze its substrate to generate a chemiluminescent signal.

### Product Information

**Cell Background:** K562  
**Cell Line Species:** Human  
**Cell Line Source:** ATCC  
**Cell Type:** Bone Marrow; Chronic Myelogenous Leukemia (CML)  
**Culture Mode:** Suspension  
**Cytotoxicity Validation:** N/A  
**Storage:** Short term (<24 h): Store at -80°C; Long term (>24 h): Store in vapor phase of liquid nitrogen.

### Cytotoxicity Assay Performance

Cells were plated in a 96-well plate and incubated at 37°C and 5% CO<sub>2</sub> for indicated amount of time. Compound was added and the plate was incubated at 37°C/5% CO<sub>2</sub> using the assay conditions described below. Target cell death was detected using the KILR detection reagent according to the recommended protocol. Additional reagents needed are noted on this document.



**Target Cell Number/Well:** 10,000  
**Control Compound:** Triton X-100  
**Cell Seeding Time (minutes):** 0  
**Compound Incubation Time (minutes):** 960  
**Compound Incubation Temperature (°C):** 37  
  
**EC<sub>50</sub> for Compound:** 0.006  
**Signal:Background Ratio:** 9.5  
**Max % Lysis:** 83.9

### Passage Stability

This cell line has been confirmed to be stable through 15 passages with no significant drop in assay window or change in EC<sub>50</sub>.

### Mycoplasma Testing

This lot was tested and found to be free of mycoplasma contamination. Data available upon request.

### Required Materials

The following additional materials are required but not provided:

Product Use*	Product Description	Catalog Number
Detection	KILR <sup>®</sup> Detection Kit	97-0001M
Cell Culture	AssayComplete™ Cell Culture Kit-101	92-3101G
Cell Plating	AssayComplete™ Cell Plating 39 Reagent	93-0563R39A
Cell Detachment	Not Applicable	Not Applicable
Cell Thawing	AssayComplete™ Thawing Reagent T6	92-4106TR
Cell Freezing	AssayComplete™ Freezing Reagent F5	92-5105FR
Ligand Dilution	AssayComplete™ Protein Dilution Buffer	92-0023

\*Please inquire about our cell line-specific AssayComplete Starter Packs to get you started with your cell culture needs.

### Required Antibiotics

Antibiotic Name	Concentration (µg/mL)	Catalog Number
AssayComplete™ Puromycin	Not Applicable	Not Applicable
AssayComplete™ Hygromycin B	Not Applicable	Not Applicable
AssayComplete™ G418	500	92-0030

### Additional Ligand Information

**Control Compound:** Triton X-100

For order placement or technical support, please call 1.866.448.4864 (North America) or +44.121.260.6142 (Europe) or e-mail [info@discoverx.com](mailto:info@discoverx.com). For additional information, please visit [discoverx.com](http://discoverx.com).

## Limited Use License Agreement

These products may be covered by issued US and/or foreign patents, patent application and subject to Limited Use Label License.

Please visit [discoverx.com/license](https://discoverx.com/license) for a list of products that are governed by limited use label license terms and relevant patent and trademark information.