

## CHO-K1 PTGER1 Gq Cell Line

**Catalog Number:** 95-1003C2 **Lot Number:** See Vial  
**Contents:** 2 vials, 1 x 10<sup>6</sup> cells per vial in 1 mL

### Background

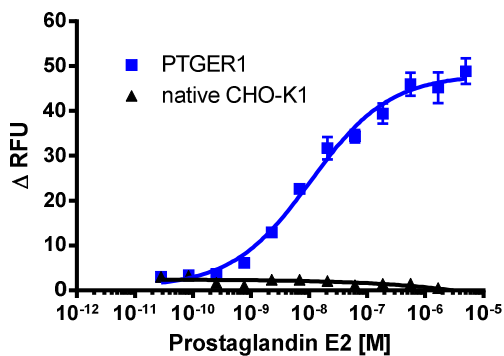
DiscoverX<sup>®</sup> Calcium cell lines overexpress naturally Gq coupled, wildtype GPCRs and are designed to detect calcium mobilization in response to agonist stimulation of the receptor. Signal can be detected using the Calcium No Wash<sup>PLUS</sup> Detection Kit.

### Product Information

**Target GPCR:** PTGER1  
**Description:** Prostaglandin E receptor 1 (subtype EP1)  
**Receptor Family:** Prostanoid  
**Coupling:** Gq  
**Accession Number:** NM\_000955.2  
**GPCR Species:** Human  
**Cell Type:** CHO-K1  
**Storage:** Short term (<24 h): Store at -80°C; Long term (>24 h): Store in vapor phase of liquid nitrogen.

### Functional Performance

Cells were plated in a 384-well plate and incubated overnight at 37°C and 5% CO<sub>2</sub> to allow the cells to attach and grow. Culture media was removed and replaced with dye loading buffer from the Calcium No Wash<sup>PLUS</sup> detection kit according to the recommended protocol. Target cells and native parental cells were stimulated with a control agonist and calcium mobilization was detected using a FLIPR<sup>®</sup> Tetra (Molecular Devices, Inc.). Please refer to page 2 for recommended assay reagents, detection reagents, and control compounds.



**Cell Number/Well:** 10000  
**Control Agonist:** Prostaglandin E2  
**Signal Read Time (@ 2 second intervals):** 2 Minutes  
**EC<sub>50</sub> for Agonist Stimulation (nM):** 10.7  
**Signal:Background at Agonist E<sub>max</sub>:** 1.4

### Passage Stability

This cell line has been confirmed to be stable through 10 passages with no significant drop in assay window or change in EC<sub>50</sub>.

### Mycoplasma Testing

This lot was tested and found to be free of mycoplasma contamination. Data available upon request.

### Required Materials

The following additional materials are required but not provided:

Product Use*	Product Description	Catalog Number
Detection Reagent	Calcium No Wash <sup>PLUS</sup>	90-0091
Cell Culture	AssayComplete™ Cell Culture Kit-107	92-3107G
Cell Plating	AssayComplete™ Cell Plating 2 Reagent	93-0563R2A
Cell Detachment	AssayComplete™ Cell Detachment Reagent	92-0009
Cell Thawing	AssayComplete™ Thawing Reagent T2	92-4102TR
Cell Freezing	AssayComplete™ Freezing Reagent F2	92-5102FR

\*Please inquire about our cell line-specific AssayComplete Starter Packs to get you started with your cell culture needs.

### Required Antibiotics

Antibiotic Name	Concentration (µg/mL)	Catalog Number
AssayComplete™ Puromycin	Not Applicable	Not Applicable
AssayComplete™ Hygromycin B	Not Applicable	Not Applicable
AssayComplete™ G418	800	92-0030

### Additional Ligand Information

**Control Agonist:** Prostaglandin E2

**Vendor:** DiscoverX® (Catalog No. 92-1154)

For order placement or technical support, please call 1.866.448.4864 (North America) or +44.121.260.6142 (Europe) or e-mail [info@discoverx.com](mailto:info@discoverx.com). For additional information, please visit [discoverx.com](http://discoverx.com).

## Limited Use License Agreement

These products may be covered by issued US and/or foreign patents, patent application and subject to Limited Use Label License.

Please visit [discoverx.com/license](https://discoverx.com/license) for a list of products that are governed by limited use label license terms and relevant patent and trademark information.