

Certificate Of Analysis

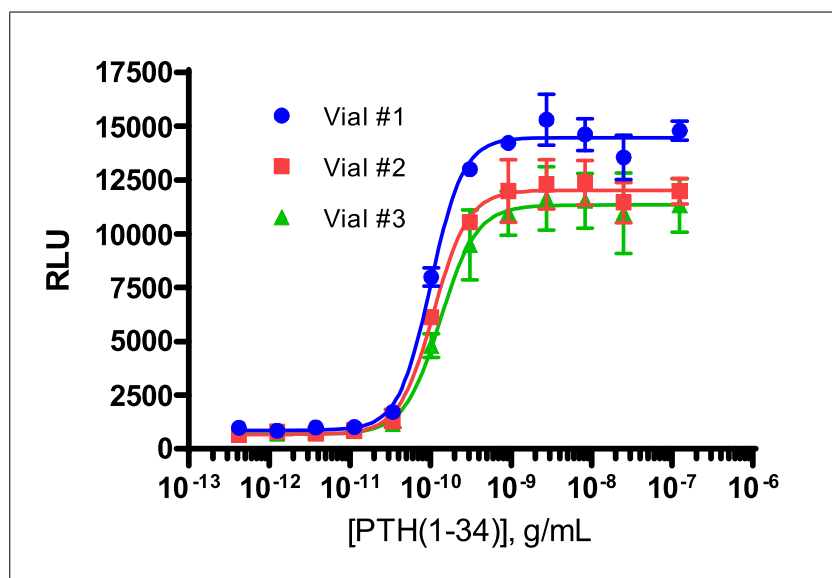
Background

cAMP Hunter™ Bioassay cells are engineered to overexpress naturally Gi or Gs coupled, wildtype GPCRs and are designed to detect changes in intracellular cAMP levels in response to ligand stimulation of the receptor. These cells are designed to be used with the included HitHunter cAMP detection kit.

Product Name	cAMP Hunter™ CHO-K1 PTHR1 Bioassay
Cryovial Label	CHO-K1 PTHR1 cAMP Bioassay Cells
Bioassay Catalog Number	95-0118Y2
Bioassay Manufactured Lot #	22B1808
Passage # @ Freezing	3

Assay Information	
Target	PTHR1
Accession Number	AY449732
Target Description	Parathyroid hormone receptor 1
Receptor Family	Parathyroid hormone
Coupling	Gs & Gq
Target Species	Human
Cell	CHO-K1
CP Reagent	AssayComplete™ Cell Plating 2 Reagent (DiscoverX, 93-0563R2A)
Ligand	PTH(1-34) (DiscoverX, 92-1082)
Ligand Diluent	AssayComplete™ Protein Dilution Buffer B3
Detection Kit	cAMP Detection Kit for Bioassays (DiscoverX, 90-0075B10)
Cell Number/Well	10,000
Cell Seeding Time (hours)	48
Ligand Inc. Time (minutes)	30
Agonist Inc Temperature (°C)	37

Cell Density Information	
Cell Number (millions)	1.2
Fill Volume per Vial (mL)	0.1
Cell Viability	
Viability at Initial Thaw (%)	96
Recovery After 24 Hours (%)	101
Mycoplasma and Sterility	
Mycoplasma Test	Passed
Sterility Test	Passed
Functional Performance (3 manufactured vials)	
S:B Ratio	Vial 1 15.1
	Vial 2 18.2
	Vial 3 16.6
EC ₅₀ (g/mL)	Vial 1 0.10 x 10 ⁻⁹
	Vial 2 0.11 x 10 ⁻⁹
	Vial 3 0.13 x 10 ⁻⁹



Shipping and Storage Information	
Shipping Conditions	Dry Ice
Storage Conditions	Short term (<24 hours): -80°C; Long term (>24 hours): Vapor phase of liquid nitrogen.
Manufacturing Date	February 2022
Expiration Date	February 2025

Shelf life of over 3 years has been established for DiscoverX cell lines and Assay-Ready Cells in general, when stored in the vapor phase of liquid nitrogen.

Documented by / Date: _____

Approved by / Date: _____