

PathHunter® eXpress ADCYAP1R1 Total GPCR Internalization Assay

Catalog Number: 93-0885E3

Lot Number:

See Vial

Contents: 1 x 10⁶ cells per vial in 0.1 mL

Background

PathHunter eXpress Total GPCR Internalization cells are engineered to co-express the ProLink™ (PK) tagged GPCR, and an Enzyme Acceptor (EA) tag localized to the endosomes. Activation of the GPCR-PK induces internalization of the receptor in EA-tagged endosomes, forcing complementation of the two β-galactosidase enzyme fragments (EA and PK). The resulting functional enzyme hydrolyzes substrate to generate a chemiluminescent signal. These cells have been modified to prevent long term propagation and expansion using a proprietary compound that has no apparent effect on assay performance.

Product Information

Target GPCR: ADCYAP1R1

Description: Adenylate cyclase activating polypeptide receptor 1

Receptor Family: VIP and PACAP

Coupling: Gs & Gq

Accession Number: AY366498

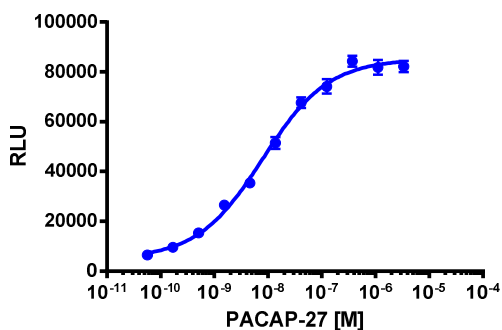
GPCR Species: Human

Cell Type: U2OS

Storage: Short term (<24 h): Store at -80°C; Long term (>24 h): Store in vapor phase of liquid nitrogen.

Functional Performance

Cells were plated in a 96-well plate and stimulated with a control agonist, using the assay conditions described below. Following stimulation, signal was detected according to the recommended protocol. Please refer below for information on control compounds.



Cell Number/Well:

10000

Control Agonist:

PACAP (1-27)

Cell Plating Reagent:

AssayComplete™ Cell Plating 0 Reagent

Cell Incubation Time (Hours):

48

Agonist Incubation Time (minutes):

180

Agonist Incubation Temperature (°C):

37

EC₅₀ for Agonist Stimulation (nM):

7.91

Signal:Background at Agonist E_{max}:

11.4

Additional Ligand Information

Control Agonist: PACAP (1-27)

Vendor: Eurofins DiscoverX® (Catalog No. 92-1061)

Limited Use License Agreement

These products may be covered by issued US and/or foreign patents, patent application and subject to Limited Use Label License.

Please visit discoverx.com/license for a list of products that are governed by limited use label license terms and relevant patent and trademark information.

Ordering: +1.510.979.1415 option 4 or e-mail CustomerServiceDRX@eurofins.com

Technical support: +1.510.979.1415 option 5 or e-mail DRX_SupportUS@eurofinsUS.com

General product information: www.discoverx.com