

# PathHunter® eXpress GPR176 CHO-K1 β-Arrestin Orphan GPCR Assay

**Catalog Number:** 93-0382E2A

**Lot Number:**

**Contents:** 1.25 x 10<sup>6</sup> cells per vial in 0.1 mL

## Background

PathHunter eXpress β-Arrestin Orphan GPCR cells are engineered to co-express the ProLink™ (PK) tagged GPCR and the Enzyme Acceptor (EA) tagged β-Arrestin. Activation of the GPCR-PK induces β-Arrestin-EA recruitment, forcing complementation of the two β-galactosidase enzyme fragments (EA and PK). The resulting functional enzyme hydrolyzes substrate to generate a chemiluminescent signal. These cells have been modified to prevent long term propagation and expansion using a proprietary compound that has no apparent effect on assay performance.

## Product Information

**Target GPCR:** GPR176

**Description:** G-protein coupled receptor 176

**Receptor Family:** Class A Orphan

**β-Arrestin Isoform:** β-Arrestin-2

**Accession Number:** NM\_007223

**ProLink™ Tag:** PK1

**GPCR Species:** Human

**Cell Type:** CHO-K1

**Storage:** Short term (<24 h): Store at -80°C; Long term (>24 h): Store in vapor phase of liquid nitrogen.

**Cell Plating Reagent:** AssayComplete™ Cell Plating 1 Reagent

## Functional Performance

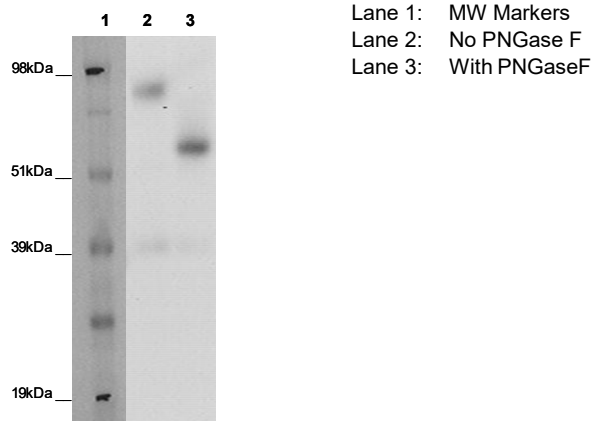


Figure 1. Cell lysates prepared from PathHunter β-Arrestin Orphan GPCR β-Arrestin Cell Lines were treated with PNGase F (Glyko: GKE -5003), run on a SDS-PAGE gel and analyzed. Untreated lane resolves a band of appropriate size corresponding to GPCR-PK fusion protein and the PNGase F treated lane resolves a deglycosylated band indicative of proper expression and folding of GPCR protein.

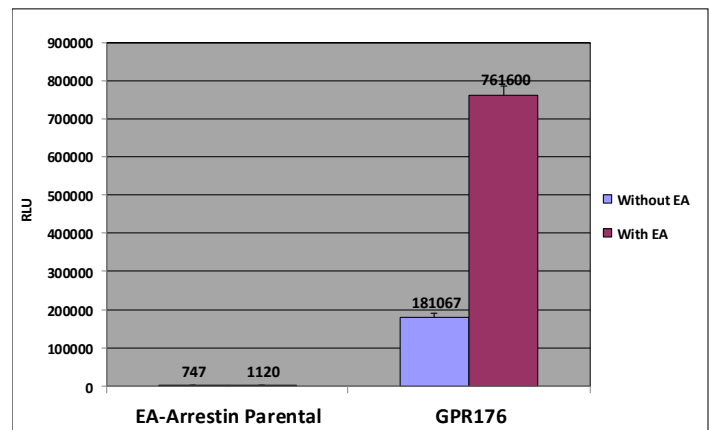


Figure 2. PathHunter eXpress cells were analyzed for basal activity as well as GPCR-ProLink™ expression by comparing the ratio of signal between untreated cells and cells treated with saturating amounts of exogenous EA, using ProLink™ Detection Kit (DrX: 92-0006). Signal from complementation of ProLink™ and EA fragments correlates to the amount of GPCR-PK expression in the cell line.



Figure 3. Viability of PathHunter eXpress cells were confirmed by bright field microscopy.

Ordering: +1.510.979.1415 option 4 or e-mail [CustomerServiceDRX@eurofins.com](mailto:CustomerServiceDRX@eurofins.com)  
Technical support: +1.510.979.1415 option 5 or e-mail [DRX\\_SupportUS@eurofinsUS.com](mailto:DRX_SupportUS@eurofinsUS.com)  
General product information: [www.discoverx.com](http://www.discoverx.com)

### Limited Use License Agreement

These products may be covered by issued US and/or foreign patents, patent application and subject to Limited Use Label License.

Please visit [discoverx.com/license](http://discoverx.com/license) for a list of products that are governed by limited use label license terms and relevant patent and trademark information.