

PathHunter[®] eXpress GPR146 CHO-K1 β -Arrestin Orphan GPCR Assay

Catalog Number: 93-0365E2A

Lot Number:

Contents: 1.2 x 10⁶ cells per vial in 0.1 mL

Background

PathHunter eXpress β -Arrestin Orphan GPCR cells are engineered to co-express the ProLink™ (PK) tagged GPCR and the Enzyme Acceptor (EA) tagged β -Arrestin. Activation of the GPCR-PK induces β -Arrestin-EA recruitment, forcing complementation of the two β -galactosidase enzyme fragments (EA and PK). The resulting functional enzyme hydrolyzes substrate to generate a chemiluminescent signal. These cells have been modified to prevent long term propagation and expansion using a proprietary compound that has no apparent effect on assay performance.

Product Information

Target GPCR: GPR146

Description: G-protein coupled receptor 146

Receptor Family: Class A Orphan

β -Arrestin Isoform: β -Arrestin-2

Accession Number: NM_138445

ProLink™ Tag: PK1

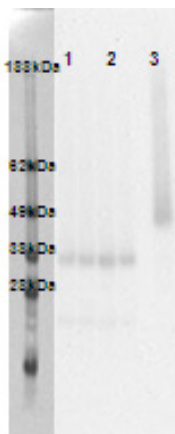
GPCR Species: Human

Cell Type: CHO-K1

Storage: Short term (<24 h): Store at -80°C; Long term (>24 h): Store in vapor phase of liquid nitrogen.

Cell Plating Reagent: AssayComplete™ Cell Plating 1 Reagent

Functional Performance



Lane 1: MW Markers
Lane 2: No PNGase F
Lane 3: With PNGase F

Figure 1. Cell lysates prepared from PathHunter β -Arrestin Orphan GPCR β -Arrestin Cell Lines were treated with PNGase F (Glyko: GKE -5003), run on a SDS-PAGE gel and analyzed. Untreated lane resolves a band of appropriate size corresponding to GPCR-PK fusion protein and the PNGase F treated lane resolves a deglycosylated band indicative of proper expression and folding of GPCR protein.

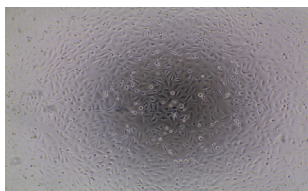


Figure 3. Viability of PathHunter eXpress cells were confirmed by bright field microscopy.

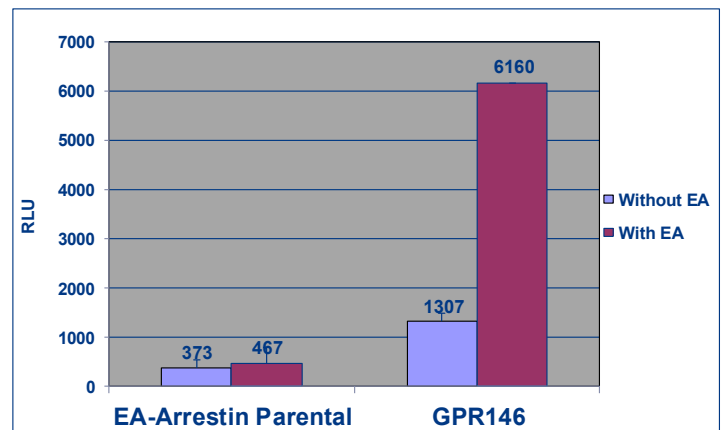


Figure 2. PathHunter eXpress cells were analyzed for basal activity as well as GPCR-ProLink™ expression by comparing the ratio of signal between untreated cells and cells treated with saturating amounts of exogenous EA, using ProLink™ Detection Kit (DrX: 92-0006). Signal from complementation of ProLink™ and EA fragments correlates to the amount of GPCR-PK expression in the cell line.

Ordering: +1.510.979.1415 option 4 or e-mail CustomerServiceDRX@eurofins.com
Technical support: +1.510.979.1415 option 5 or e-mail DRX_SupportUS@eurofinsUS.com
General product information: www.discoverx.com

Limited Use License Agreement

These products may be covered by issued US and/or foreign patents, patent application and subject to Limited Use Label License.

Please visit discoverx.com/license for a list of products that are governed by limited use label license terms and relevant patent and trademark information.