

Certificate of Analysis

CAMK1 β , active

Expression System: (Recombinant enzyme expressed in Sf21 insect cells)

Catalog Numbers: 15-001, 15-001-K, 15-001M

Parent Lot Number: 228097

Product Description

N-terminal GST-tagged, recombinant, full length, human CaM Kinase1 β , expressed by baculovirus in Sf21 insect cells. Purified using glutathione agarose. Molecular Weight = 65 kDa.

Purity

95% by SDS-PAGE and Coomassie blue staining.

Specific Activity

Parent lot# 228097: 388 U/mg, where one unit of CaM Kinase1 β , active activity is defined as 1nmol phosphate incorporated into 250 μ M KKLNRTLSEFAEPG per minute at 30°C with a final ATP concentration of 100 μ M.

Formulation

2.6 mg/ml of enzyme in 50 mM Tris/HCl pH 7.5, 300 mM NaCl, 0.1 mM EGTA, 0.03% Brij-35, 270 mM sucrose, 1 mM benzamidine, 0.2 mM PMSF, 0.1% 2-mercaptoethanol. Frozen solution.

Storage and Stability

On receipt of material store at -70°C. Unopened reagent is stable for a minimum of 1 year from date of shipment when stored at recommended storage temperature. Avoid repeat freeze/thaw cycles. For maximum recovery of product, centrifuge original vial prior to removing the cap.

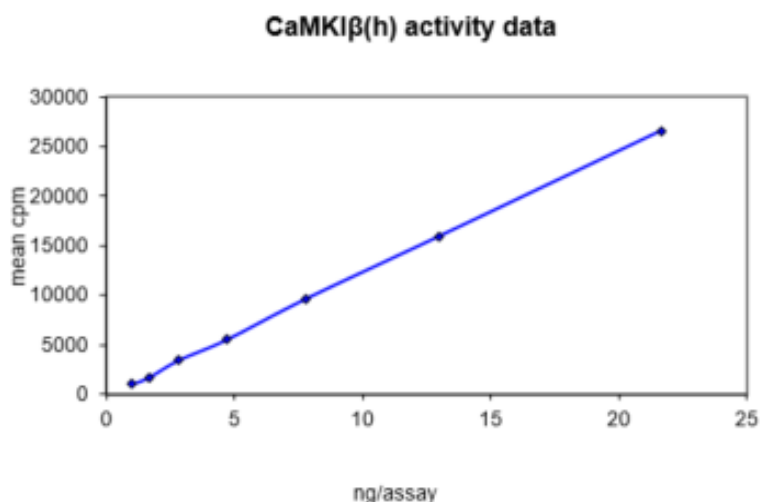
Handling Recommendations

Rapidly thaw the vial under cold water and immediately place on ice. Aliquot unused material into pre-chilled micro-centrifuge tubes and immediately snap-freeze the vials in liquid nitrogen prior to re-storage at -70°C.

Quality Control Testing

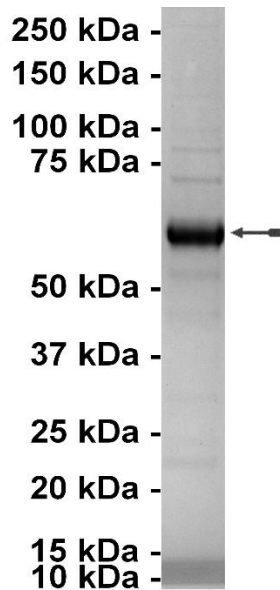
Kinase Assay:

1–21.7 ng of this lot of enzyme phosphorylated 250 μ M KKLNRTLSEFAEPG in a radiometric assay. Assay background was subtracted from the actual counts to yield the results shown below.



MS Tryptic Fingerprint: Confirmed identity as CAMK1 β , active with the translated sequence.

SDS-PAGE and Coomassie Stain: Purity was assessed by SDS-PAGE and Coomassie blue staining using 3 μ g of CAMK1 β , active.



The data presented in this document apply to the parent lot shown above and to all pack sizes derived from subsequent vialling runs of this parent lot. An alphabetical suffix after the parent lot number is used to denote each vialling run.

Sequence Information

Protein	Human CAMK1 β
Tags	N-terminal GST
Native sequence	M230 of the recombinant sequence is equivalent to M1 of native CaMK1 β
Accession number	GenBank XM_011531113.1

For Research Use Only

Unless otherwise stated in our catalogue or other company documentation accompanying the product(s), our products are intended for research use only and are not to be used for any other purpose, which includes but is not limited to, unauthorized commercial uses, in vitro diagnostic uses, ex vivo or in vivo therapeutic uses or any type of consumption or application to humans or animals.

Ordering: +1.510.979.1415 option 4 or e-mail CustomerServiceDRX@eurofins.com
Technical support: +1.510.979.1415 option 5 or e-mail DRX_SupportUS@eurofinsUS.com
General product information: www.discoverx.com